

## CONTACTS

### Brain Pool Program (BP)

+82-(0)2-3460-5629 | [yokang@nrf.re.kr](mailto:yokang@nrf.re.kr)

### Brain Pool Plus Program (BP+)

+82-(0)2-3460-5627 | [beomjinj@nrf.re.kr](mailto:beomjinj@nrf.re.kr)

### Korea Research Fellowship Program (KRF)

+82-(0)2-3460-5647 | [bpkrf@nrf.re.kr](mailto:bpkrf@nrf.re.kr)

## Researcher Matching Platform System

([bpkrf.nrf.re.kr](http://bpkrf.nrf.re.kr))

- Identify interested institutions / researchers by registering research institutes looking to recruit researchers, and job-seeking researchers
- Enable overseas researchers to discuss various topics with researchers at the host institution, such as areas of mutual interest and working conditions

## Relevant Websites

BP/KRF Support ([bpkrf.or.kr](http://bpkrf.or.kr))

National Research Foundation of Korea Homepage  
([www.nrf.re.kr](http://www.nrf.re.kr))

## Guidance on Life in Korea

Living in Korea(Institute for Basic Science) :  
[www.ibs.re.kr/livinginkorea](http://www.ibs.re.kr/livinginkorea)

Danuri: [www.liveinkorea.kr](http://www.liveinkorea.kr)

Seoul Global Center : [global.seoul.go.kr](http://global.seoul.go.kr)

# Testimonials

RUSSIA

BP Fellow : Dr. Larina Liudmila Leonidovna(Chungnam National University)  
BP period : 2019.08.01~2020.07.31

I conducted my research at KAIST from 2017 to 2018 under the BP program, and was selected for the 2019 BP program after re-applying with a new host PI through Chungnam National University. I conduct research in the field of solar energy and nanotechnology, and the research lab of my host institution is very well-equipped, so I can carry out my research smoothly. My lab has researchers of various nationalities, and everyone can communicate in English. It is great to collaborate with the large number of excellent students and researchers here, and we plan to continue our joint research after completing the BP program.

JAPAN

BP Fellow : Dr. Kaoru Kashima (Korea Institute of Geoscience and mineral resources: KIGAM)  
BP period : 2019.08.01 ~ 2020.07.31.

I am an invited researcher via the Brain Pool Program at the Korea Institute of Geoscience and Mineral Resources in Daejeon. Thanks to its excellent research facilities and having the utmost support from my host institution, the research outcomes to date have exceeded expectations. I live in Daejeon, where many government-oriented high-tech laboratories are concentrated, and the vigorous exchange of research can be seen between research institutions in the city. I highly recommend the Brain Pool program for high-profile scientists overseas for furthering their career development in Korea.

FRANCE

Post KRF Fellow : Dr. Francois Rameau (Korea Advanced Institute of Science and Technology: KAIST)  
KRF period : 2015-12-15 ~ 2020-02-29

Joining the KRF program was a fantastic opportunity to develop my career. The 5 years of support offered by the program allowed me to focus on long-term projects which are usually not approachable for most post-doctorates. Moreover, this 5-year period encouraged me to build a national network with other Korean researchers and professors. Daejeon, where I lived, is a perfect city for research and family. The city takes pride in its public order and security, and the people are very friendly. I strongly recommend the KRF program to young foreign researchers.

U.S.

Post KRF Fellow : Dr. Jiwon Kim (Institute for Advanced Engineering : IAE)  
KRF period : 2016-02-15 ~ 2020-02-29

KRF is a very important program, as it helps foreign and Korean national researchers who lack knowledge and experience with the research environment in Korea to build a support network and lay the foundation for success with their initial research in Korea.

I believe that KRF serves as a bridge between foreign researchers and Korean universities/research institutes, and it provides opportunities for overseas researchers to establish themselves as researchers in Korea. I believe that this program can be a valuable opportunity for many overseas researchers, since fellows may have a chance to get a job at the host institution after completing their KRF tenure, as was my case.

THAILAND

KRF Fellow : Dr. Chatanun Eamudomkarn (Chungbuk National University)  
KRF period : 2018.10.01 ~ 2022.12.31.

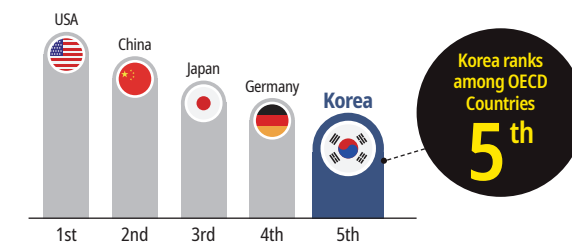
I was introduced to my host PI through a Ph.D. advisor in Thailand and was fortunate to be selected as a KRF fellow. Cheongju, where I live now, is a small and comfortable city. When I came to Korea, I was pleasantly surprised by the well-equipped research lab and the excellent teamwork between researchers. The KRF program supports fellows with their housing allowance, so you can enjoy a stable life while you fully focus on your research. The host PI and lab members helped me with settling down in Korea, as well as with improving my research performance. I look forward to achieving great research results through the KRF program.

# Research Environment in Korea

## The World's Fifth Largest Investor in R&D

- Korea's total R&D investment in 2017 was USD 69.7 billion, the fifth largest amount among OECD countries.
- The government's R&D investment budget has increased annually to reach USD 20.2 billion (KRW 24 trillion) for 2020.

## Expenditures on Research and Development (R&D) for OECD countries in 2017

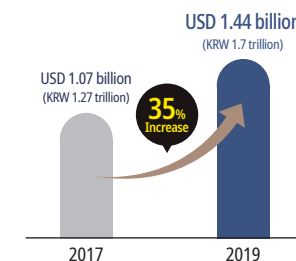


## Valuing Researcher Autonomy and R&D

- Korea claimed the world's No.1 spot in terms of the ratio of R&D spending to GDP in 2018, with 4.81%.

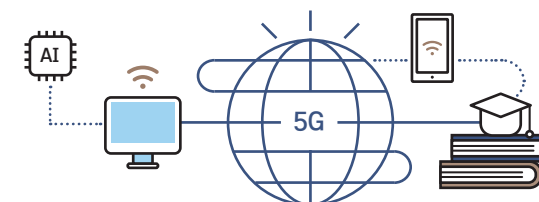
## Budget Increase of Basic Research Support

- The Korean government is increasing its budget to support basic research every year, with an emphasis on autonomous research culture for researchers.



## Excellent Research Infrastructure

- Korea has established an environment suitable for developing and testing new technologies for the Fourth Industrial Revolution, enabling it to attain achievements such as being the first country in the world to commercialize 5G.
- Korea is home to many world-class, cutting-edge tech companies (Samsung, LG, Hyundai, etc.), as well as government-funded research institutes with excellent facilities (refer to [nst.re.kr](http://nst.re.kr)) and world-renowned universities (Seoul National University, KAIST, POSTECH, etc.).



# Korea's Invitation Programs for Outstanding Overseas Researchers

Brain Pool Program(BP)  
Brain Pool Plus Program(BP+)  
Korea Research Fellowship Program(KRF)



Ministry of Science and ICT



National Research Foundation of Korea

# Global Research Invitation Programs



Support R&D Activities at Research Institutes in Korea for Overseas Researchers

**Host Institutions** Government-funded research institutes, national/public research institutes, universities, research institutes affiliated with universities, non-profit research institutes, and corporate research institutes

**Supporting Fields** All science and technology fields

Target Researchers for Each Program	Program	Eligible Candidates
	Brain Pool : BP	(Mid-career scientists) Researchers who hold a Ph.D. with 5 or more years of R&D experience, or those who have 5 or more years of overseas, onsite R&D experience in the industry regardless of possession of a Ph.D.
	Brain Pool+ : BP+	(Researchers in the fields of new industries) Ph.D. conferred researchers in new industries, or those who have 5 or more years of overseas, onsite R&D experience in the industry regardless of possession of a Ph.D.
	Korea Research Fellowship : KRF	(Early-career researchers) Researchers who have obtained a Ph.D. within the past 5 years

**How to Apply** Applicants should first secure a host institution (university, research institute or industry) on their own, and then submit an application to the NRF via the host institution.

Type	Year	Nationality	Indian	Chinese	Korean	American	French	Japanese	Russian	Canadian	German	British	Other	Total
BP	2015		8	1	14	13	1	1	4	2	2	1	16	63
	2016		8	4	11	6	1	3	3	5	1	1	11	54
	2017		12	1	5	24	0	5	2	3	1	0	11	64
	2018		7	3	10	17	2	4	2	1	0	0	7	53
	2019		19	4	27	16	1	2	4	2	2	1	19	97
	Sub Total		54	13	67	76	5	15	15	13	6	3	64	331
KRF	2015		19	8	9	3	3	2	2	1			13	60
	2016		23	4	5	2	2	1	-				13	50
	2017		14	9	5	1	1	-	-		1		15	46
	2018		6	5	1	2	2	-	-			1	9	26
	2019		33	11	26	1	1	-	-		2		47	121
	Sub Total		95	37	46	9	9	3	2	1	3	1	97	303
Total			149	50	113	85	14	18	17	14	9	4	161	634

## BP Brain Pool Program

Support outstanding overseas researchers with carrying out their research at research institutes in Korea and establishing research networks

**Eligible BP Candidates** Overseas scientists in all science and technology fields, who have more than five years of experience in R&D outside of Korea after obtaining a Ph.D.

Quota for 2020 BP Recruitment :  
Approx. 75 researchers



### Level of Support

Type	Program Duration	Personnel Costs	Invitation Expenses
[Type 1] Short-Term Support	6~12 months	Based on the Brain Pool fellow's <b>annual salary level at his/her original affiliation</b>  (Min. KRW 5 mil. ~ max. KRW 25 mil. per month)	Airfare, moving expenses, insurance premiums, business travel expenses, child education subsidies, subsidies for assigned staff, etc.
[Type 2] Long-Term Support	3 years (2 years + 1 year)		

### Application and Selection Schedule

Application Call	Application Submission Period	Selection Notification
1 <sup>st</sup> Call	Feb. 10 (Mon.) ~ Feb. 28 (Fri.)	March
2 <sup>nd</sup> Call	Mar. 9 (Mon.) ~ Apr. 24 (Fri.)	May
3 <sup>rd</sup> Call	May 4 (Mon.) ~ Jun. 26 (Fri.)	July
4 <sup>th</sup> Call	Jul. 6 (Mon.) ~ Aug.28 (Fri.)	September

## BP+ Brain Pool Plus Program

Support overseas researchers in new industrial fields with being recruited as full-time (permanent) employees at research institutes in Korea

**Eligible BP+ Candidates** Researchers in new industries who are residing overseas, and will be hired as full-time (permanent) employees by host institutions in Korea

Quota for 2020 BP+ Recruitment :  
Approx. 10 researchers



### Level of Support

Program Duration	Personnel Costs	Housing Allowance	Research Expenses	Other Expenses
Max. 10 years (2+3+3+2)	Personnel costs at the level of a full-time employee or higher <u>Fund matching by host institution is mandatory</u>	Monthly rent/interest payments on lump-sum housing lease loan Max. <b>KRW 12 mil./year/ researcher</b>	Personnel costs for participating researcher(s) such as post-docs, initial costs of setting up a laboratory, etc.	Child education subsidies (Nuri Support), private insurance premiums, relocation expenses, business travel expenses, etc.
	Max. Support: KRW 600 Mil. / Year			

### Application and Selection Schedule

Application Call	Application Submission Period	Selection Notification
1 <sup>st</sup> Call	Mar. 2 (Mon.) ~ Mar. 13 (Fri.)	May

**Important Note** BP+ fellows must be employed as a full-time employee at a host institution in Korea

## KRF Korea Research Fellowship

Support talented early-career researchers to assist them with focusing on long-term research activities in Korea's research environment

**Eligible KRF Candidates** Foreign, or Korean national based abroad, post-doc researchers who have obtained a Ph.D. in any science and technology field within the past 5 years

Quota for 2020 KRF Recruitment :  
Approx. 60 researchers



### Level of Support

Type	Program Duration	Program Type	Personnel Costs	Housing Allowance	Other	Subsidies for Host Institutions
<b>[Type 1]</b> Invited researchers who are residing overseas (Overseas → Korea)	3~5 years	1-1	Support of up to KRW 70 mil. /year			
			Up to KRW 50 mil.	Up to KRW 12 mil.	Up to KRW 5mil. (airfare, moving expenses, travel expenses, etc.)	KRW 5 mil. (fixed amount)
1-2		Support of up to KRW 110 mil. /year				
		50% or more of the total amount of the KRF fund for personnel costs, housing, child tuition fees, etc. in matching funds from the host institution is mandatory	Up to KRW 5mil. (airfare, moving expenses, travel expenses, etc.)	KRW 5 mil. (fixed amount)		
<b>[Type 2]</b> Long-term residents in Korea (Korea → Korea) ※ Korean nationals cannot apply		Up to KRW 40 mil.			For [Type 2] researchers, funding for “Living Expenses and Other Expenses” is not applicable.  Matching funds of 25% or more must be provided by the host institution for the KRF fellow's personnel costs	

### Application and Selection Schedule

Application Call	Application Submission Period	Selection Notification
1 <sup>st</sup> Call	Feb. 10 (Mon.) ~ Mar. 31 (Tues.)	May